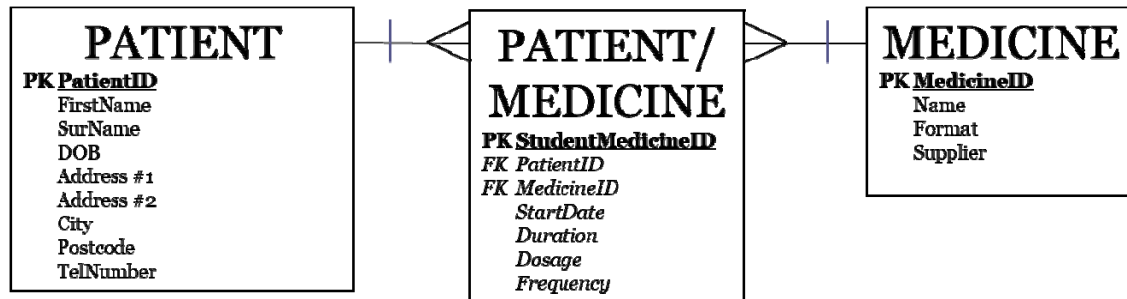


ERD Exercises #1

Draw an Extended ERD for each of the these situations below. Remember to resolve any many to many relationships.

An extended ERD contains attributes and clearly shows the primary and foreign keys as required by BTEC.



At this stage you can guess the attributes but make sure the primary and foreign keys are correct

- 1) Each of the Le Grand Corporation's divisions is made up of many departments. Each of the departments has many employees assigned to it, but each employee works for only one department.
- 2) During a period of time, a customer can rent many videotapes from DVD R US. Each of the DVDs at DVD R US can be rented to many customers during that period of time.
- 3) An airline can be assigned to fly many flights, but each flight is flown by only one airline.
- 4) UniPart operates many factories. Each factory is located in a region. Each region can be "home" to many of UniPart factories. Each factory employs many employees, but each of these employees is employed by only one factory.
- 5) An student may have been awarded many degrees, and each degree may have been awarded to by many students.
- 6) A DIY store sells several tools to the public (such as power saws and sanders). Each product has several different manufacturers who manufacture it.